



Walhampton



Project 26 Review

Summer 2024

Intro from the Head



“ Last year we shared Project 26, our strategic plan to cover through until 2026. Please do read it if you have not done so already. It acts as a guide and as a framework for all we do in the next few years, always building on the values and ethos that underpin a Walhampton education.

Walhampton is, of course, an extremely busy place with a huge amount going on in all areas of school life in and beyond the classroom. Our social media feeds are always a good way to catch up with what is going on and please do look at the latest Mercury; you will find a whole range of articles about the academic and co-curricular achievements of the children.

The purpose of this document is slightly different. Taking the strategic plan, it is important to highlight progress in the last twelve months and to outline current priorities and plans: to give a sense of direction in terms of the “big picture.” We will do this annually throughout the lifespan of Project 26.

On behalf of the whole School community, I would like, as always, to record my sincere gratitude to all staff and supporters of the School. We know you are our biggest advocates and appreciate your continued support in spreading the Walhampton message.

Jonny Timms
Head



“ We are delighted to present our first Walhampton Impact Report showcasing our progress against our strategy - Project 26.

Although the independent schools sector is likely to face challenging headwinds over the next few years, it is encouraging that we have such strong tailwinds at Walhampton which will help propel us through this period. Project 26 provides a clear strategy which the Governing Board and Leadership Team review regularly to track our progress. Annually, we identify the priorities for the coming year and we have pleasure in sharing our achievements and those plans with you.

Personally, I would like to thank all the staff, in every part of the School, for all they do for Walhampton and for our children. And thank you to you, our parents, for all the support you give to the Walhampton community.

Victoria Speers
Chair of Governors



Our vision

Our purpose is:

To be a radical educator that honours traditional values and the individual child



Our USPs are:

Culture, Home, Educational Philosophy

Our pillars are:



Deliver a distinctive and outstanding education



Prioritise community wellbeing

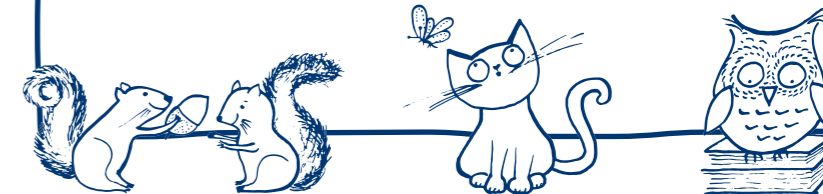


Lead our market



Nurture global contributors

Our values are: Kindness, Curiosity and Achievement



INNOVATION



1. Deliver a distinctive and outstanding education

The most fundamental element of our provision is an outstanding and distinctive education, the first pillar of Project 26. The strong results achieved at Common Entrance, and the number of scholarships to senior schools, further demonstrate the integrity of the School's approach. The dedication of Walhampton teachers to the intellectual, social and personal development of Walhamptonians as a whole child is exceptional.

Destination schools and scholarships

Walhampton feeds a large number of senior schools with pupils typically moving on to between 10 and 15 different schools at 13+ each year. Year 8 leavers between 2020 and 2024 have successfully moved on to the following schools.

| | | | | |
|------------------------|----------------------|-------------------|-------------------------|----------------|
| Ballard | Bedales | Bradfield | Brighton College | Bryanston |
| Canford | Charterhouse | Christ's Hospital | Clayesmore | Dauntsey's |
| Durlston | Eton | Godolphin | Embley | Harrow |
| King's Canterbury | King Edward VI (KES) | King's Bruton | Marlborough | Monkton Coombe |
| Portsmouth High School | Priestlands | Radley | Royal High School, Bath | Sherborne |
| Sherborne Girls | Stonor | Talbot Heath | Wellington | Winchester |



Accepted onward scholarships

2023 & 2024
Year 8 leavers* | 24 (43%)



Shortlisted Independent Schools of the Year 2023
Independent Boarding School of the Year
- Best Boarding Prep

*Year 8 data for 2023 leavers and anticipated 2024 leavers is shown here based on pupils who are continuing in the UK education system and not returning to their home country

Academic success

- The Townsend Warner History Prize 2024 saw two of our Year 7s make the final with our top finisher 23rd of 1,275 entries
- The UK Maths Trust Junior Maths Challenge saw 19 awards to our Year 7 and 8 pupils including 6 gold certificates and 5 children selected to progress to the next round
- A Highly Commended in the Canford Junior Earthshot Prize Competition to a Year 5 pupil
- Bebras computing challenge included 11 invitations to take part in the Oxford University Computing Challenge, open to the top 10% in the country

“Every single teacher last night we were so impressed with, and you could just feel the passion and enthusiasm behind each and every one of them. If only my teachers had been like that back in the day”
Parent feedback

Teaching and learning

The Pre-Senior Baccalaureate is embedded across Walhampton and the core skills are at the heart of our teaching and learning. PSB lessons focus on these skills and pupils have been working on being better learners.

The examination calendar is set annually in September with better protection for academic lessons in the timetable and to support the planning of other events. Staff moderate grades to ensure consistency and moving forward children given an 'expected' grade should be typically achieving an average of 60% in any assessment.

There is increased accountability of students, with Year 7 and 8 pupils now attending parents' evenings.

Our third STEAM Fair broadened the categories of entry encouraging not just entrepreneurial ideas but also super explainers or collectors. Summer 2024 will see improvements to our DT classroom as we recognise the space required for different teaching methods and equipment.

Hordle House Scholars

We are committed to recognising, celebrating and further inspiring pupils who demonstrate high levels of potential in their chosen scholarship discipline. Becoming a scholar at Walhampton is in equal parts about performance, development and inspiration. Scholars are encouraged to perform at a higher level through opportunities to compete in regional and national competitions or to exhibit or perform publicly in their discipline. In May 2024 a group of Scholars competed in the prestigious Winton Cup at Stowe, a humanities competition with the theme this year centred around 'Is War Just?'

Scholars are provided with development opportunities, such as additional sessions with their teachers, visiting speakers or coaches. Walhampton's whole community also benefits from the inspiration scholars provide as they are expected to encourage others, particularly younger children. In time, they will take on a coaching role, too. This year we introduced a new Technology Scholarship to our Hordle House Scholars Programme with two Year 6 pupils receiving this inaugural award.





2. Prioritise community wellbeing

Our commitment to Community Wellbeing under Pillar 2 burns more brightly than ever: pupils and staff are committed to serving others, thinking globally, embracing diversity, and living sustainably, people who make their communities and the world a better place through service leadership, rooted in moral purpose. A Radically Traditional education fosters and nurtures a sense of self-awareness and confidence, resilience, agility and independence in our pupils so that they take responsibility for their own wellbeing. We will train and develop mental health 'fitness' just as we do with our physical health.

A culture of wellbeing is now prioritised at Walhampton to both pupils and staff. Actions and initiatives this year include:

- Pre-Prep wellbeing check-ins established with “fizzy” and “fabulous” buckets
- Restorative behaviour policy embedded across the school
- Parents are engaged positively with Little Kitchen talks and parent workshops around topics of importance or interest, including phonics in the Pre-Prep and staying safe online
- People of Power group established amongst pupils with weekly meetings and work on their wall mural to celebrate diversity and inclusion at Walhampton
- Wellbeing Health Care Plans implemented
- Weekly wellbeing and pastoral feature in The Mercury
- Walhampton coaching programme for scholars
- Weekly Lake Run for families
- Staff wellbeing questionnaire completed
- Regular WPA events to engage our community
- A neurodiversity celebration week including parent and pupil talks as well as staff training



Finalist in the 2023 Talk Education Innovation in Nutrition or Food category

Moving forward we are looking to:

- Hold a Pastoral Day in Autumn 2024 to focus on promoting independence, free play and responsibility in the real world
- Roll out wellbeing checks to the Prep School
- Appoint a new Assistant Head Pastoral to further enhance all that we do in this area
- Expand the coaching programme beyond scholars
- Achieve Human Kind accreditation for staff wellbeing



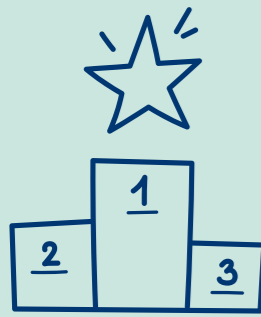
“Mental health and wellbeing is the foundation of children’s success in their school environment and ensures they reach their true potential. As a life coach and mentor I am looking forward to extending my work with Walhampton as they grow their efforts in enabling more children to build essential life skills in resilience, emotional intelligence, confidence and motivation.”

Katie Smith - Children’s Life Coach and Mentor

“ELSA provision helps our pupils understand and identify their emotions and respect the feelings of those around them. We create a reflective space where children feel safe and secure, enabling them to find their own solutions.”

Emma Dunne - Emotional Literacy Support Assistant





3. Lead our market

Admissions

We continue to uphold the integrity and consistency of our admissions standards, as we seek to build on the School's academic position and competitiveness in the market, whilst ensuring each pupil can flourish and thrive. We work in open and honest partnership with our prospective families, ensuring that Walhampton is the right choice of school. Our aim is to maintain a broad and consistent intake of pupils who are keen to make the most of the extensive academic and co-curricular opportunities available to them. Without doubt, the best way to understand Walhampton is to visit the School and meet pupils and staff. Current pupil numbers are robust but we continue to explore new markets and encourage both flexi and full boarding.

376
Pupils



56% boys
44% girls

248
Families



24 full boarders
5 weekly boarders
60 regular flexi boarders

Pupils are from
7 countries
representing
11 nationalities



Financial performance

Key to building the financial resilience of the school, and navigating the political and economic headwinds, is growing both income generation beyond fees and the Foundation's endowment fund. It is pleasing to see that the Estate continues to go from strength to strength, both in terms of commercial revenue and in service to the wider community. The Governors are focussed on maintaining an equitable balance between the benefit to current pupils, whilst also ensuring that a sound infrastructure and financial base are secured for the next generation of pupils.

We are appointing a new commercial coordinator to focus on the income generating activities that the School is already engaged with, and to further build on diversifying our income stream. These activities complement Walhampton's wider objectives and all earnings directly benefit the School to assist with bursaries and future developments. Activities to date have included holiday clubs, hire of facilities, and hosting a Chinese student immersion programme.



“The Governors are aware that whilst families are committed to providing the best possible education and opportunities for their children, the financial cost of achieving those aims is high. Every effort is made to review operating costs and to ensure value for money is obtained for expenditure. The aim is to limit as far as possible the growth in fees, whilst ensuring that qualitative standards are maintained and a sufficient surplus is generated to invest in the ongoing capital development programme.”

Victoria Speers, Chair





4. Nurture global contributors

It is our responsibility to develop in our pupils the strength of character, the authentic self-confidence and the qualities of humility, grit and resilience both to flourish in the decades ahead and to give themselves to all the different communities to which they belong as global contributors.

Partnerships and Outreach

Partnerships within our community are strong and we continually look for ways to build upon existing relationships and to extend our reach. Initiatives include:

- Inviting local Primary Schools to our model boat race
- Our Director of Music visits South Baddesley School once a week to assist in their music curriculum and brought four schools together with Walhampton for a combined choral concert in Winchester Cathedral
- Thirteen local schools participated in our 44th Perry Dalziell Cross Country Race
- Facilities are shared with local Primary Schools and the New Forest Hunts Pony Club
- WPA fundraising for two local charities

Over this academic year, we have reflected on an increased focus on bursarial support while simultaneously emphasising the integrity of Walhampton's scholarship programme. We are proud to allocate a sum equivalent to 3-4% of fee income on means tested bursaries, to the families of children who would most benefit from a Walhampton education, and aim to grow this alongside the work of the Walhampton School Foundation Trust (WSFT). We have one Royal SpringBoard pupil and will welcome an additional SpringBoarder in September.

“I hope life at Walhampton continues to be wonderful – I do miss it!”
2022 leaver



Foundation Trust

Our aim is to provide an education of the highest quality and we believe we have a moral, social and educational responsibility to ensure that this is made available to as wide a range of children as possible. Our means tested approach to transformational bursaries is underpinned by two pillars:

- To make a Walhampton education accessible to local families whose income would otherwise make this impossible
- To work with Royal SpringBoard to place children at Walhampton



We are proud to offer bursaries and encourage families to pursue this route should such support enable their child to come to Walhampton. Priority is given to those who are likely to gain most from a Walhampton education and who will contribute fully to the life of the School. As well as transformational bursaries, the Trust will also provide funds to support capital and special projects.

Fundraising for the WSFT has commenced and we are grateful to our founding donors for their support. We will continue to explore gifting, fundraising and broadening the general case for support amongst the wider Walhampton community. From September 2024 the Trust will be supported by the WPA fundraising receiving a quarter of the funds raised.

Alumni

Walhampton has a strong alumni network who are supportive of the school, evidenced by many current pupils being second and even third generation Walhamptonians. We recognise the importance of building even stronger relationships with our alumni not just in our case for financial support but also recognising the gift of time and knowledge.

Our February alumni open house coincided with our magnificent Hansel and Gretel Opera evening, held across two nights in order to allow alumni to attend as well as current parents. We are planning a London event for alumni later this year.

Sustainability

Walhampton is committed to reducing our contribution to climate change year on year and whilst we recognise that achieving Carbon Zero by 2030 is increasingly difficult, this does not stop our ambition and drive to build sustainability into all that we do. Our pupils remain passionate about sustainability and we embed the 17 Sustainable Development Goals into our daily education. Initiatives across Walhampton include:

- Meat free Monday
- Food waste surveys
- Battery and recycling collection points
- Forever Fashion/Trashion show
- Pre Prep book exchange
- Food bank collections
- Pre loved uniform shop
- Eco points
- Conservation enrichment activities and whole school Eco Day
- Gas boilers being phased out, biomass boiler in use and first air source heat pump installed
- Purchased electricity is green



Finalist in the Tatler 2023 School Awards 'Eco-Warrior' category and included in the Tatler schools Guide 2024

“

This innovative prep has its finger on the pulse when it comes to providing a holistic education where diversity, inclusion and pupil empowerment are paramount. A fully rounded ethos encourages children to be children, while a broad academic offering, stellar co-curricular and a decidedly 21st-century eco awareness means pupils are nurtured in the best possible environment to prepare them for senior school.”

Talk Education 2024 review

“

Pupils we met were confident, polite, active and animated. Kindness permeates the school.”

**Good Schools Guide
2024 review**



Walhampton

WALHAMPTON SCHOOL, LYMINGTON, HAMPSHIRE, S041 5ZG

Telephone: +44 (0)1590 613300 Email: office@walhampton.com Web: www.walhampton.com

Head: Jonny Timms MA (Hons), QTS, M.Ed.

Walhampton School Trust Ltd. Registered in England No. 871641. Registered Charity No. 307330